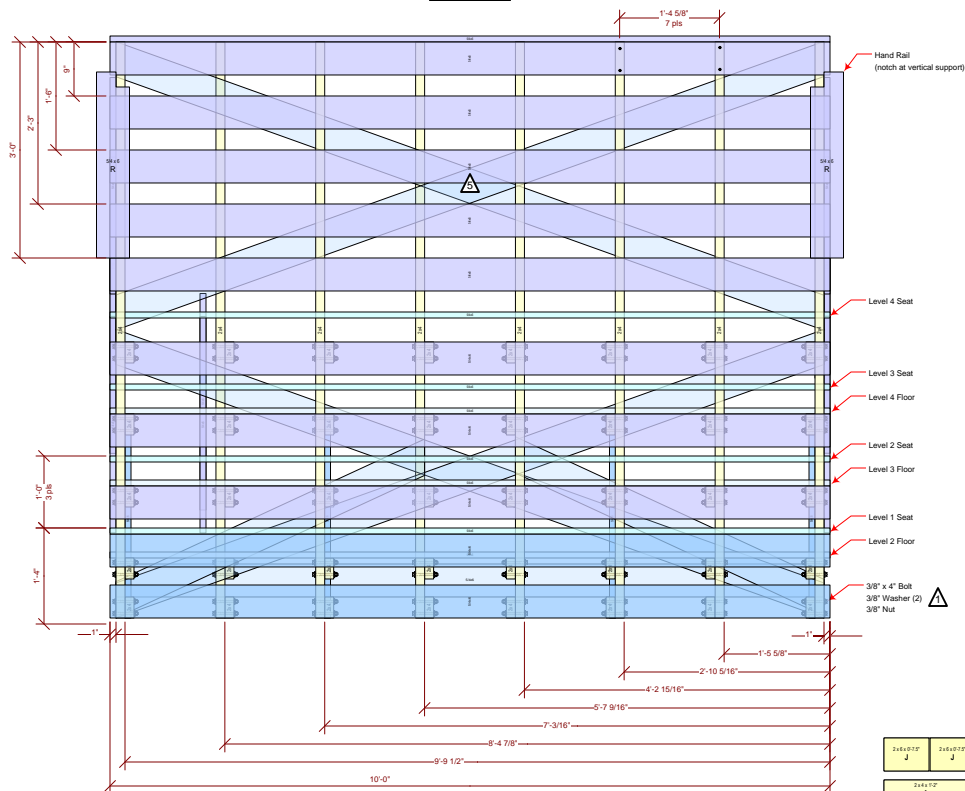


# Bleachers, 4-Level, Wooden, Portable, 10' Length

Designed by Kirt Blattenberger 1/15/2012 Rev 3 ©2012

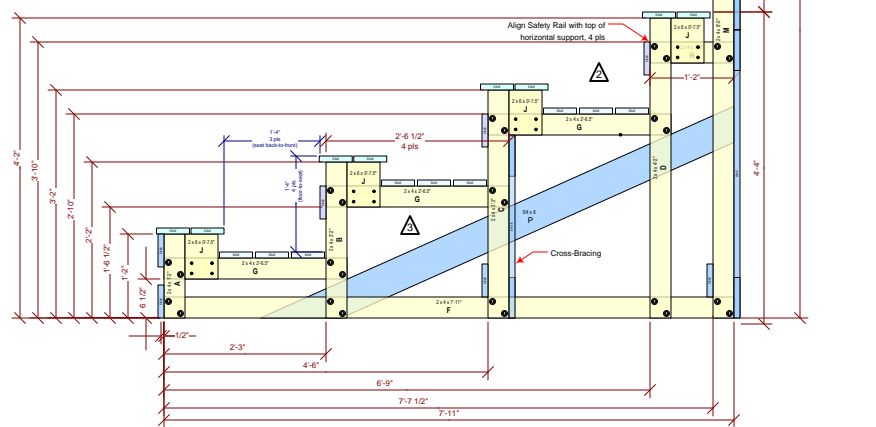
**Front View**



**Key & Notes**

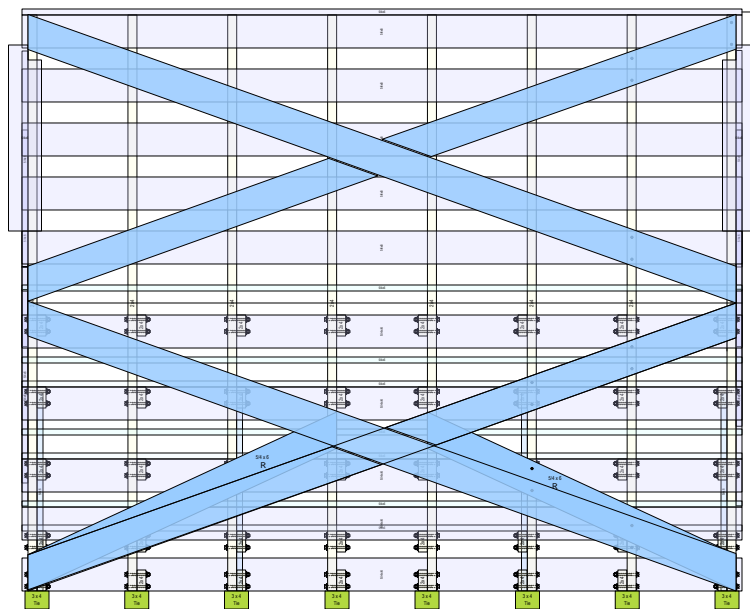
- Bracing
- Safety Railing
- Structure
- △ All nuts, bolts, and washers are galvanized.
- △ All screws are decking type for PT wood. #8 x 2" for face grain, #8 x 3" for end grain.
- △ For left and right end panels, substitute K for B, L for C.
- △ Drill clearance hole for bolts where necessary.
- △ Cut 1/2-way through each board at overlap.

**Right End View  
Main Structure, qty. 8**  
(assemble bolts from left on 4, right on 4)

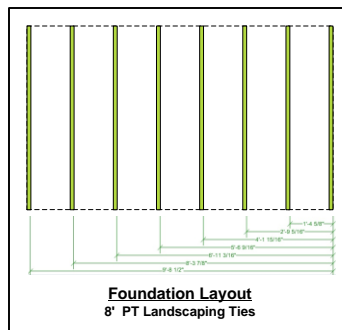


2x6x8 PT (1/3 per frame, 2-1/3 per bleacher)									
2x4x12 PT (1 per frame, 8 per bleacher)		2x4x12 PT (1 per frame, 8 per bleacher)		2x4x12 PT (1 per frame, 8 per bleacher)		2x4x12 PT (2 per bleacher)			
A		B		G		G		H	
D		E		C					
L				K					

Frame component templates



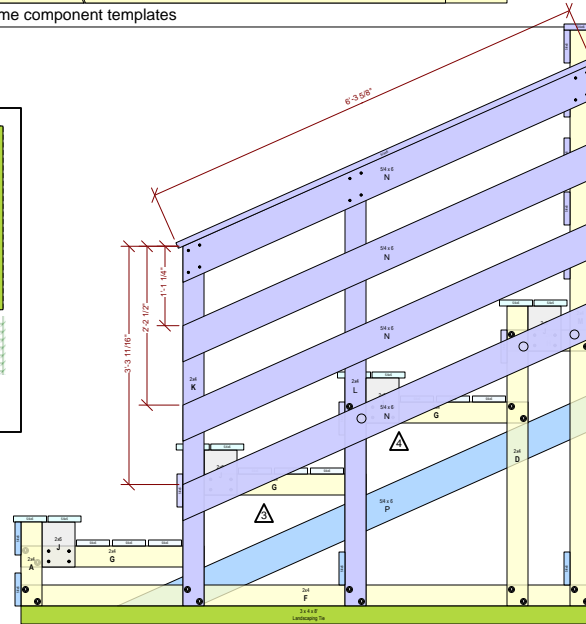
**Rear View  
Safety Railing & Bracing**



**Foundation Layout  
8' PT Landscaping Ties**

## IMPORTANT!

These plans are being made available free of charge. No guarantee of any kind is made regarding the safety or suitability of any part of the bleachers. Build and use the bleachers at your own risk. Two of these units were built by my son-in-law, daughter, and me and are in service at an equestrian riding center on a daily basis. Ours were made according to the plans and are very sturdy.



**Right End View  
Safety Railing & Bracing**  
(left end identical)